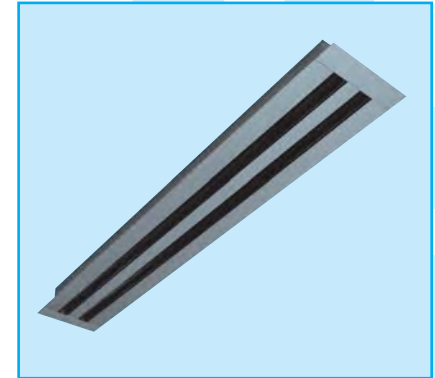
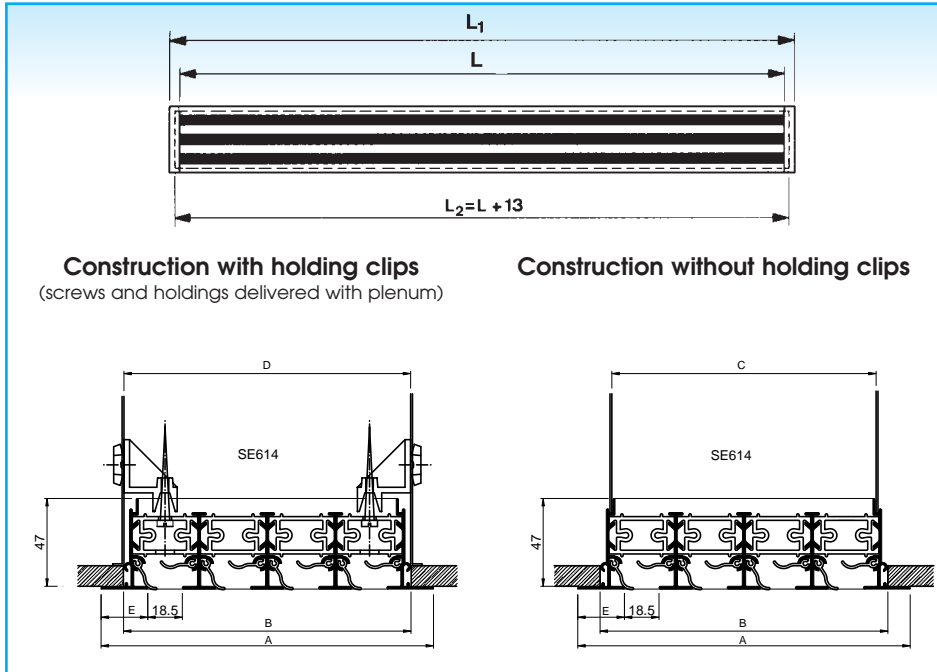


## ADJUSTABLE SLOT DIFFUSER SE600

### Installation dimensions



### Application

The slot diffuser, type SE600 is used for the supply of cooled and heated air in facilities such as offices, shops, meeting rooms, ...

It is designed for ceiling or sidewall mounting and is available with 1 to 8 slots. Each slot is individually adjustable and equipped with 2 deflector vanes of a special design to minimise the internal turbulences. An ideal air supply pattern adjustable over 180° can be obtained.

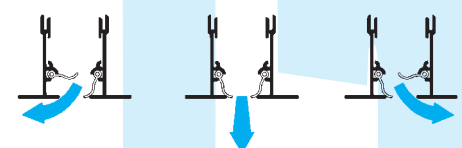
All lengths are available for an ideal fit in every ceiling-system.

### Technical information

#### Characteristics:

- **SE600:** available with up to 8 slots
- all lengths available (in steps of 1 mm): from 300 mm up to 2000 mm in one piece; larger lengths with intermediate pieces (length = 1500 mm) and end pieces
- 25 mm frame
- non operational parts or dummy diffusers; slots are blanked off by black PVC strips (SE650)
- exhaust: without deflectors
- supply: horizontal or vertical air supply pattern possible through adjustable deflectors

#### Adjustment possibilities:

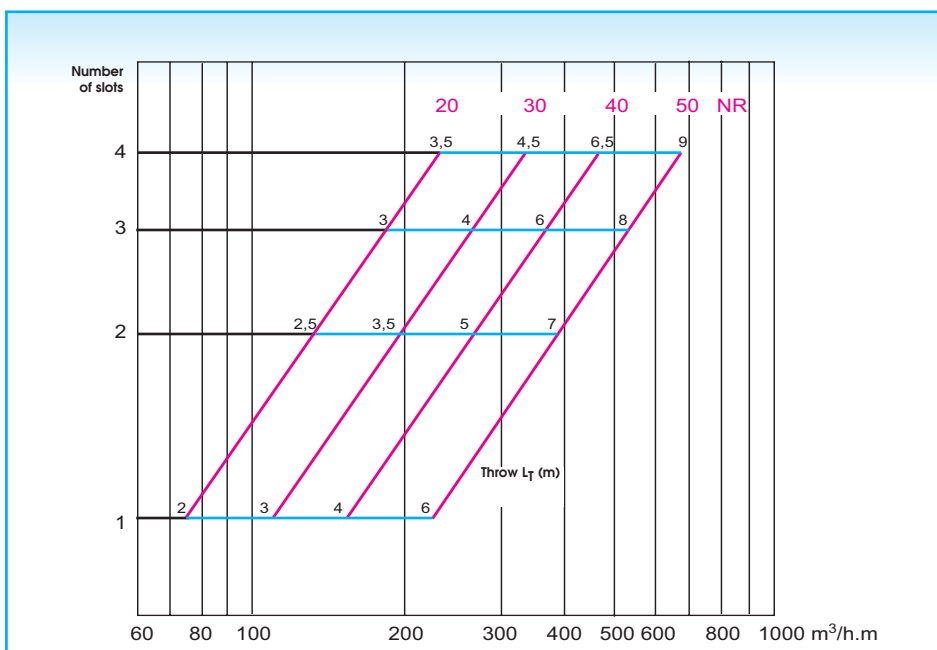


- available with plenum:
  - with or without damper in the inlet
  - up to a length of 1600 mm supplied with one circular inlet spigot, over 1600 mm: two circular inlet spigots

	Number of slots							
	1	2	3	4	5	6	7	8
<b>A (SE)</b>	68,5	105	141,5	178	214,5	251	287,5	324
<b>B</b>	48	84	121	157	193	230	266	303
<b>C</b>	32,5	69	105,5	142	178,5	215	251,5	288
<b>D</b>	44	81	117	154	190	227	263	300

L = slot length      SE:  $L_1 = L + 50$       **All dimensions in mm**  
 $L_2$ , B = minimum ceiling opening      E = 25

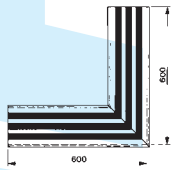
### Fast selection diagram



Throw factor is based on a  $v_R$  of 0,17 m/s in the occupied zone.  
 See page 4 012 for a detailed selection

## Construction:

- natural tone anodised aluminium, with black or white deflectors
- galvanised steel sheet, optional insulation



## Specifications description

### Example:

Aluminium linear diffuser with 2 supply slots and adjustable deflectors. Complete with fixed mounted plenum, internal insulation, with circular side inlet spigot and damper. Natural tone anodised diffuser, black aluminium deflectors.

**Type:** SE612 + SP132 G  
L = ... mm

## Accessories

**BOBSE:** blanking off baffle; steel sheet painted black RAL 9005

**SE mounting brackets** for ceiling application: direct mounting when no plenum is provided.

**Insertpat:** for diffuser mounting on different plenum lengths.

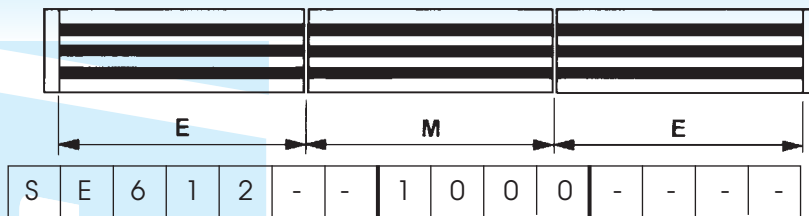
(see Assembly drawing SP100)

## Fixing

- concealed fixing
- either by direct and fixed mounting of the diffuser on the plenum (mounting by Grada upon re-quest)
- or with mounting brackets so the diffuser can be removed from the plenum
- plenum provided with mounting eyes (ø 7 mm), mounting straps available upon request

## How to order

SE600 with 2 slots and black aluminium deflectors, slot length 1000 mm



slot length (mm)

- : slot diffuser in one piece with end caps on both sides

E: end pieces, with one end cap

M: intermediate piece, without end caps

C: corner section 90° (600 x 600 mm)

number of slots

0: exhaust, no deflectors

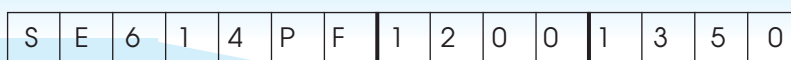
1: supply, with **black** aluminium deflectors

2: supply, with **white** aluminium deflectors

5: dummy diffuser

E: frame width 25 mm

Slot diffuser in a panel



slot length (mm) panel length

F: painted in RAL-colors

P: with panell, with rebord of 10 mm on all sides\*

Z: with panel, with fine line 5/8 ont het two shortest sides\*\*

4: number of slots

1: black deflectors

2: white deflectors



\* All panels have a width of 300 mm and a flange of 10 mm at all sides.

\*\* All panels have a width of 300 mm and a flange of 10 mm at the longest side. The length of the panel, is the total length, fine line included

**Remarque:** The length of the panel must be 55 mm (at the minimum) longer than the nominal length of the diffuser.